



DUO-MOD PEDESTAL STAND

Multi-functional pedestal stand can hold two mixing stations with hoses to help speed the wash down and cleaning process.

Strahman's Duo-Mod Pedestal Stand can be permanently installed anywhere there is access to steam, hot and cold water, and airline pipes, and where washing and sterilizing equipment and the environment is necessary, providing the user with more flexibility.

- Rugged construction with a rigid base for permanent mounting
- Powder-coated stainless steel resists rusting and scratching
- Supports two mixing units, front and back-mounted
- Fits all styles and types of Strahman wall plates
- Will accommodate units with Soft Seal Piston Valves: angle back entry, globe top entry and ball valves (may require extra fittings)
- Easily remove/replace mixing unit with another desired unit
- One Year Limited Warranty

And, don't let the sleek and simple design fool you! This is a strong and sturdy unit weighing 55 lbs. providing ample stability to mount two mixing stations or other equipment.

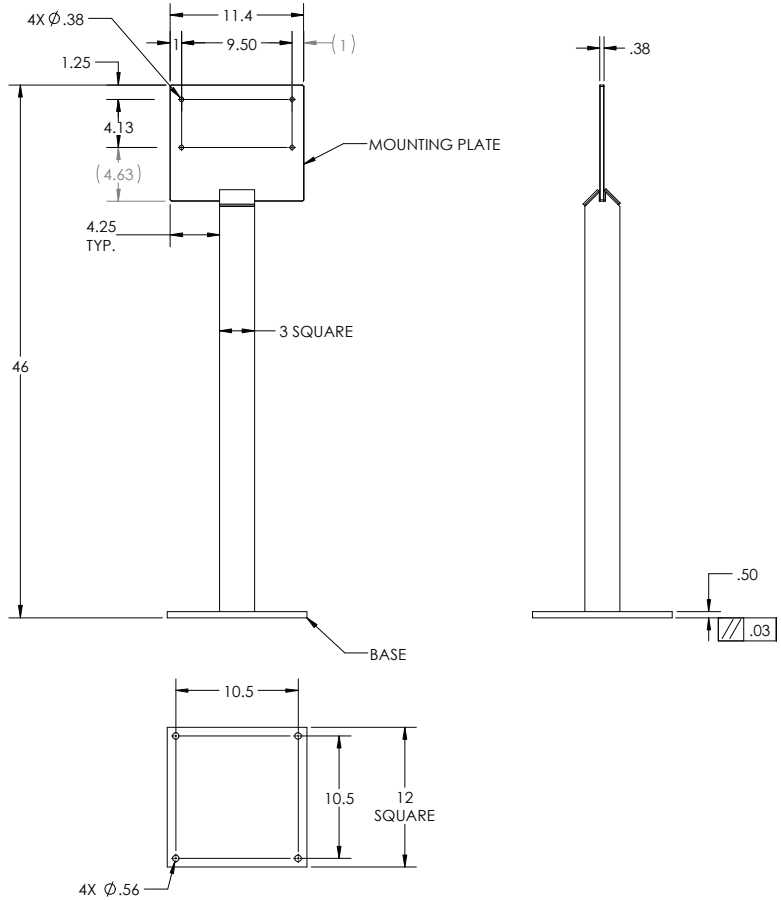
Duo-Mod Pedestal Stand is also adaptable for numerous applications beyond mixing units such as mounting instruments, controls, and similar equipment or appliances.



MODPEDSTAND
Duo-Mod Pedestal Stand
in Powder-Coated
Stainless Steel



MODPEDSTAND
Powder Coated Stainless Steel



FITS ALL STRAHMAN MIXING STATIONS

| | STEAM & COLD WATER MIXING STATION | HOT & COLD WATER MIXING STATION | HOT OR COLD WATER MIXING STATION |
|------------------------|-----------------------------------|---------------------------------|----------------------------------|
| DUO-MOD PEDESTAL STAND | M-5700TG | M-750TG | M-756 |
| | M-5144TGHE | M-750 | M-156N |
| | M-5000TS | M-159TG | - |
| | M-5000TG | M-159 | - |
| | M-144TG | - | - |



Duo-Mod Pedestal shown with one mixing station



Duo-Mod Pedestal shown with two mixing stations

WEDUOMOD051320