



M-5144TGHE

High-Efficiency Steam/Cold Water Washdown Station

Precision engineered for industrial washdown applications with fluctuating water pressures, the M-5144TGHE blends cold water and steam into a consistent, safe output. Its auto shut-off feature protects your equipment and team by cutting steam flow in the event of supply failure. With high-capacity performance up to 200°F and 150 PSI, it's ideal for food processing, chemical plants, or any operation requiring rugged, reliable sanitation.

KEY FEATURES

- **Direct Diffuse® Steam Trap:** Rapidly and efficiently eliminates condensate from steam lines, reducing system wear and failure.
- **Automatic Steam Shut-off:** Activates if cold water pressure drops below 20 psi to prevent dangerous steam discharge; it also prevents overheating, reducing energy waste, and enhances worker safety.
- **Dial-Type Temperature Gauge:** Displays exact wash water temperature in both °F and °C for optimal safety and control.
- **Premium Materials:** Durable bronze construction is corrosion-resistant designed for long life and built with components to ASTM standards, reducing total cost of ownership and increases reliability

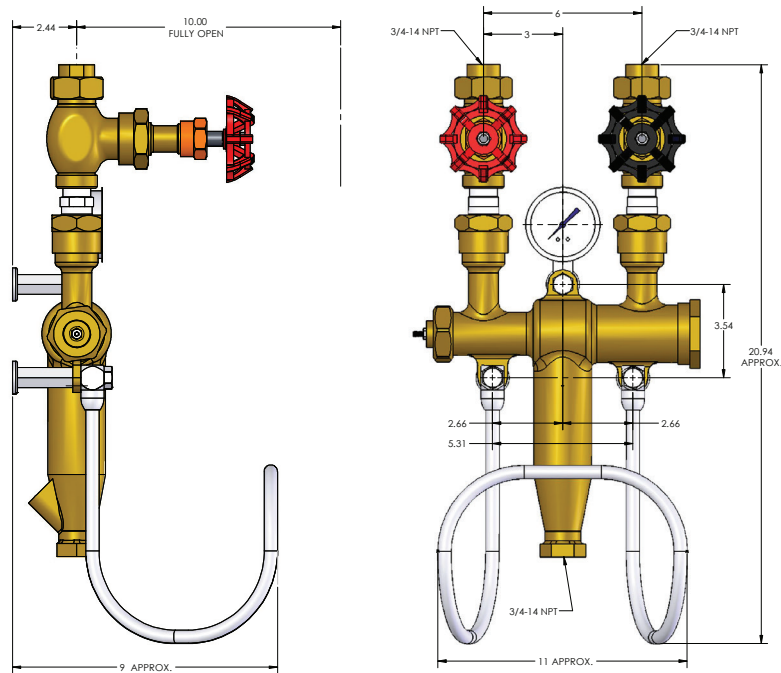
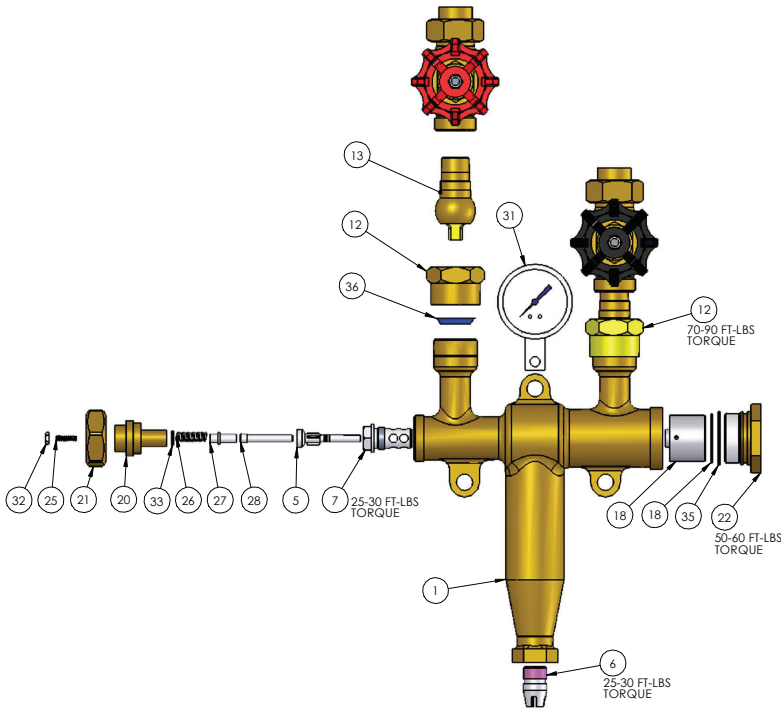
SPECIFICATIONS

Required Steam Pressure	40 psi - 150 psi
Required Water Pressure	40 psi - 80 psi
Maximum Water Temperature	200°F (93° C)



Built for Safety and Simplicity

- Prevents hazardous steam burns through controlled blending and automatic safeguards.
- Easy manual control of steam and cold water valves allows users to fine-tune water temperature on demand.
- Designed for easy installation: wall-mounted, recessed, or pedestal configurations.


INSTALLATION & MAINTENANCE NOTES

- USE A STRAINER AND STEAM TRAP TO MAINTAIN SYSTEM INTEGRITY AND PROLONG VALVE LIFE.
- STEAM PRESSURE IS REQUIRED FOR OPTIMUM PERFORMANCE
- SHUT DOWN UNIT DURING EXTENDED PERIODS OF NON-USE.
- STEAM TRAP CAN BE INSTALLED HORIZONTALLY OR VERTICALLY; THERMODYNAMIC TRAP (THT) MUST REMAIN LEVEL.

ORDERING INFORMATION & PARTS

THIS BRONZE UNIT INCLUDES A STAINLESS STEEL HOSE RACK AND COMES WITH OUR PATENTED DIRECT DIFFUSE® STEAM TRAP. HOSE AND SPRAY NOZZLE SOLD SEPARATELY.

REFER TO THE PARTS LIST FOR MATERIALS AND REPLACEMENT OPTIONS. ALL PARTS ARE BUILT TO LAST, USING ASTM-RATED STAINLESS STEEL, BRASS, AND BRONZE COMPONENTS.

REPLACEMENT PARTS LIST

PART NO.	PRODUCT CODE	DESCRIPTION (MATERIAL)
1	M514BDMBR	LOW FLOW MAIN BODY (includes items 6 and 7) (ASTM CA836)
2	HH0050130200OZ	HOSE RACK CAP SCREW (not shown) (SET OF 6) (SST304, ASTM A276)
3	WAT0050	HOSE RACK LOCK WASHER (not shown) (SET OF 6) (SST410)
4	HRCONBR	HOSE RACK CONNECTOR (not shown) (SST304)
5	POPPETM	STEAM POPPET (SST303, ASTM A743)
6	SJET	STEAM JET (SST416, ASTM A582)
7	PSEATBR	POPPET SEAT (BRASS ASTM C46400)
8	HRCOMPLETE0000	HOSE RACK W/FITTINGS (not shown) (SST304, ASTM A276)
10	MUSPAC	HEX SPACER (not shown) (SST416, ASTM A582)
11	MUWPLTBR	WALL PLATE (optional) (not shown) (BRASS B16, CA360)
12	BCNUTBR	BALL CHECK UNION NUT (BRASS ASTM B16 C36000)
13	BCBRG	BALL CHECK VALVES COMPLETE (includes item 36) (BRASS ASTM B16, C36000, SST303, ASTM A582)
15	M5000LFRETRNG	Low Flow retaining ring (SST303, ASTM A582)
18	WCHM5000LF	low flow WATER CHAMBER (SST303, ASTM A582)
19	WCHHOUSASSYBR	WATER CHAMBER HOUSING (includes item 35) (BRASS B16, C36000)
20	M5TSPGUIB	POPPET GUIDE (BRASS B16, C36000)
21	M500PNUTBR	POPPET GUIDE NUT (BRASS B283, CA37700)
22	M500LFBNUTBR	LOW FLOW BODY NUT (BRASS B283, CA37700)
25	SHN8320031OZ	SET SCREW (SET OF 6) (SST304, ASTM A276)
26	SPRGM5000	POPPET SPRING (SET OF 6) (SST302, ASTM A240)
27	M500PGEX	GUIDE EXTENSION (SST416, ASTM A 582)
28	M5TSPUSHB	PUSHER (SST303, ASTM A582)
30	JN002528OZ	JAM NUT (SET OF 6) (SST18-8)
31	TGGF02	TEMP GAUGE (BRASS B283, CA37700)
33	ORNG008IB	O ring poppet stop (EPDM)
35	M5000LFORNG	LOW FLOW "O" SEALING RING FOR WATER CHAMBER HOUSING (SET OF 6) (EPFM)
36	BCGAC	BALL CHECK GASKET (COPPER)

**Temperature Gauge: 100-250°F (40-120°C)